

1. Introduction

DBEXform is easy to use data form designer for databases. Components are added by using visual drag and drop interface.

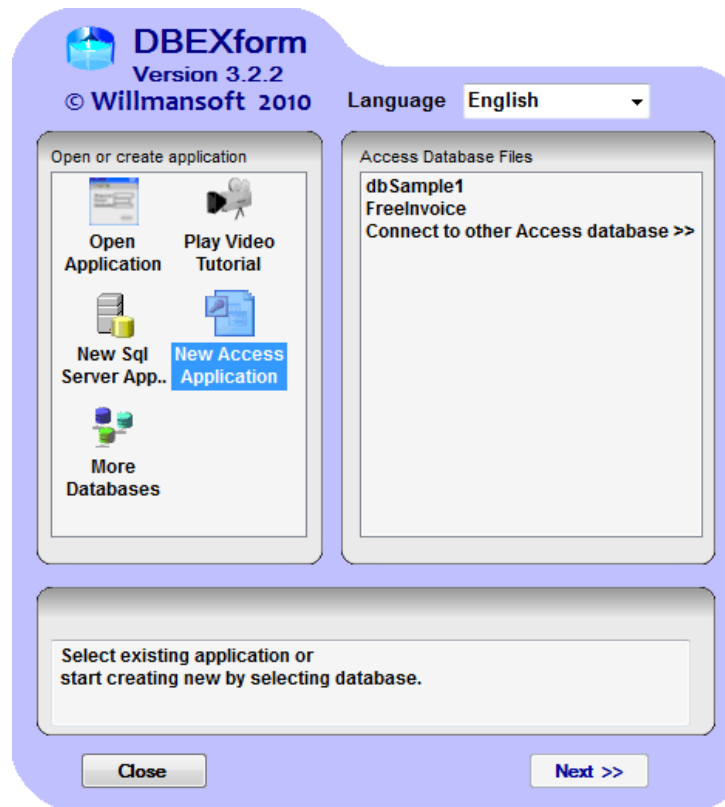
Simple development environment is built inside the Database Explorer, so it's easy to edit forms just on the install time.

Changing between design and running mode is made in seconds. Design mode is exactly same looking as user form with designer toolbar. All changes are usable immediately.

Supported databases are **Access** and **MsSql** server. Testing and small distribution could be made using free SQLExpress.

LikeBasic script language allows to design more complex user interfaces. Property values could be assigned as traditionally static or by using scripts. Script properties are truly dynamic.

2. Create new application

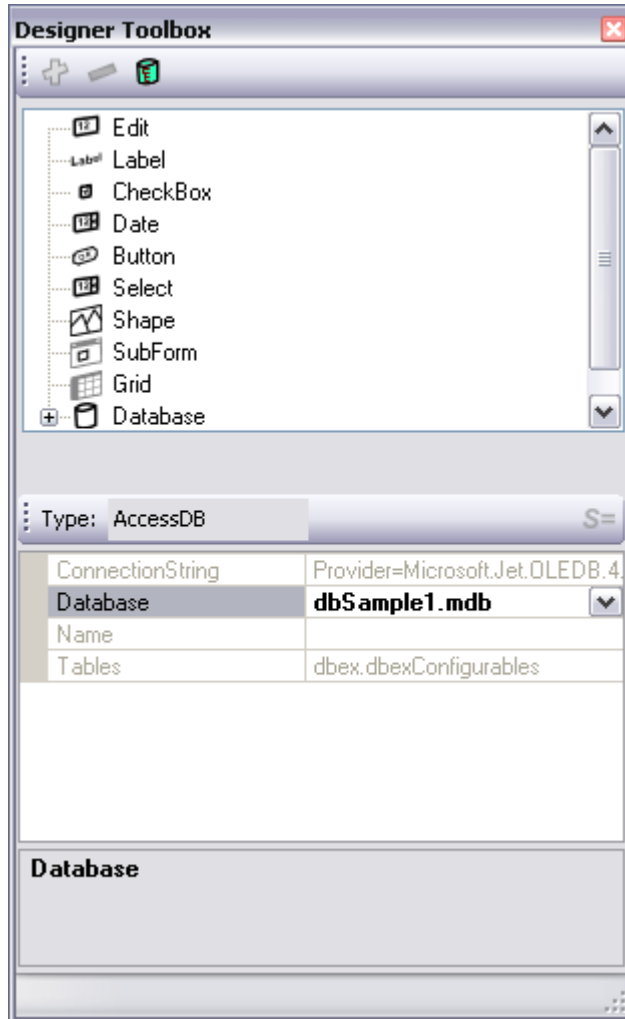


To create a new Database form collection called as Application, select New from the main menu and select one of selected application type. Empty form will be created. When DBEXform starting application selection and creation menu will be shown.

Select correct database, and press next. Sql Server and Access have wizards to help connect, Select another databases from More Application icon.

3. Configuring database connections

3.1 Configuring Access database connection

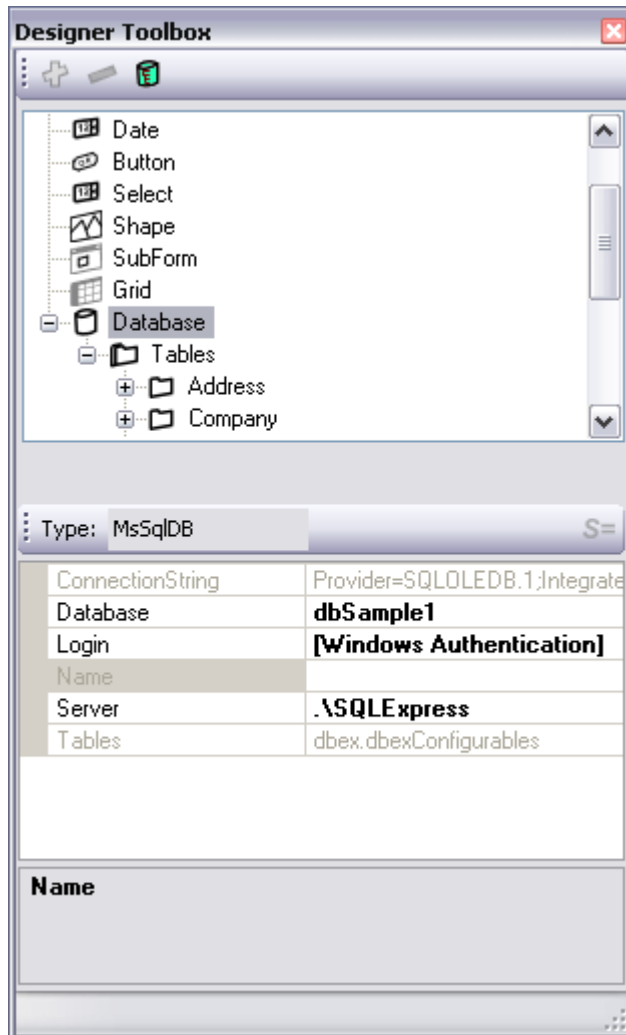


Select Database component from designer toolbox window.

You can select *.mdb Access file using a file dialog opened with dropdown button, or write a filename to Database property field.

After changing value of Database structure should be read using Read Schema Button in the toolbar of Database window.

3.2 Configuring MsSql Server database connection



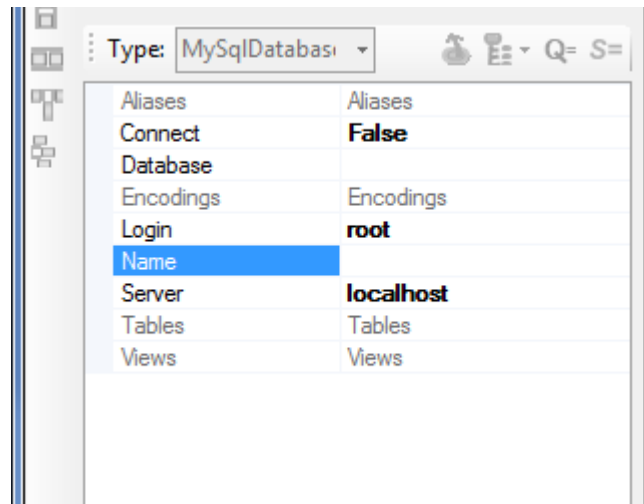
Select Database component from designer toolbox window.

Enter Server name or select server name from dropdown list. ".\sql express" is for SqlExpress database installed into the local computer.

Enter user name into the Login property if database require using login name. [Windows Authentication] is used for integrated authentication mode.

Database dropdown list all exist databases, if authentication not fails, and server is found.

3.3 Configuring other database connection

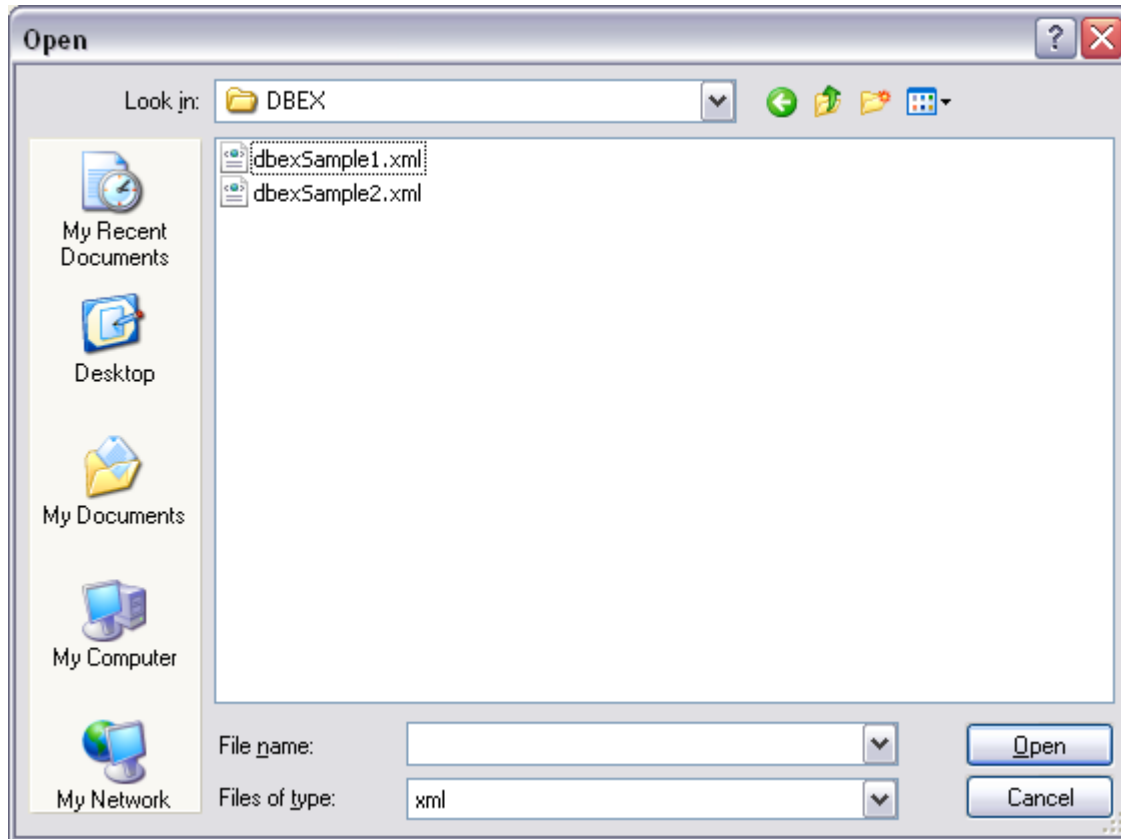


Enter information about database server. When selecting Connect=true DBEXform asks password for database if passwords are in use.

After connecting to database server use Read DB Schema from designer menu or use corresponding icon on designer toolbox.

4. Running and Designing existing application

4.1 Opening existing application



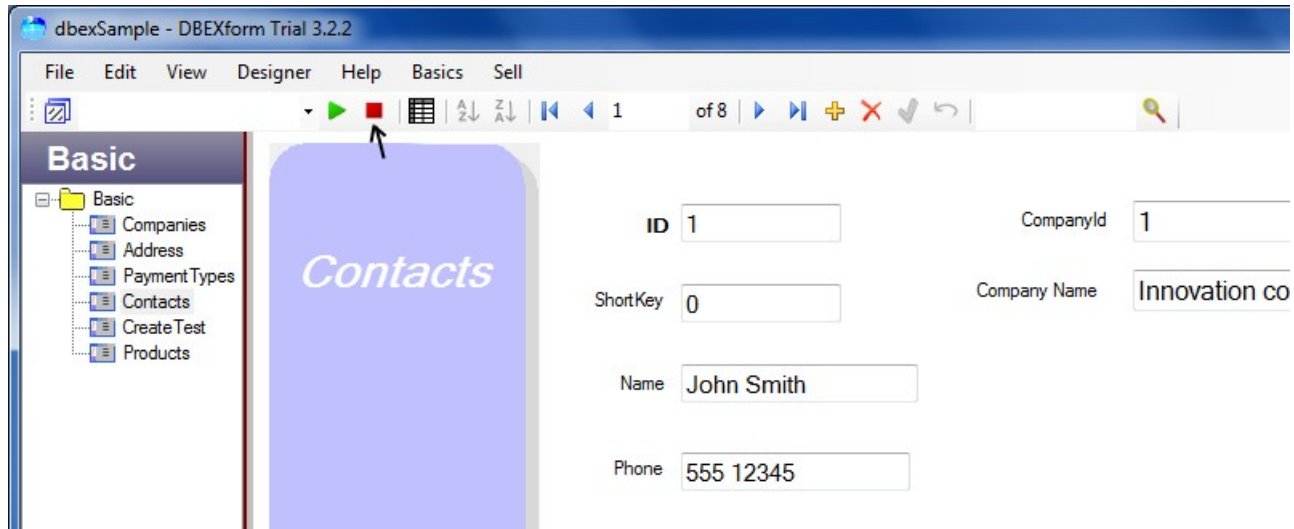
Select from File menu Open and select application file *.xml with open file dialog window.

4.2 Running application

Select form from drop down list and press Run button. Pressing enter key in drop down field will have the same effect.

4.3

4.4 Designing application

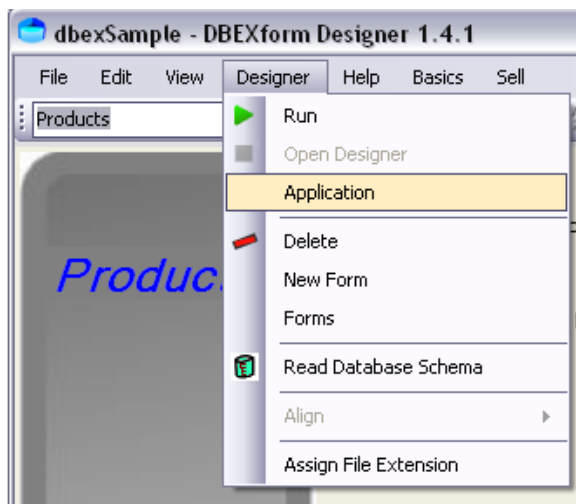


Pressing stop sign - red box, will open the Designer toolbox window.

4.5 Saving application

Select "save" from file menu when application is modified in designer mode. Application will be saved with same name. To save the application with a other filename select "save as" from file menu.

4.6 Modifying application settings



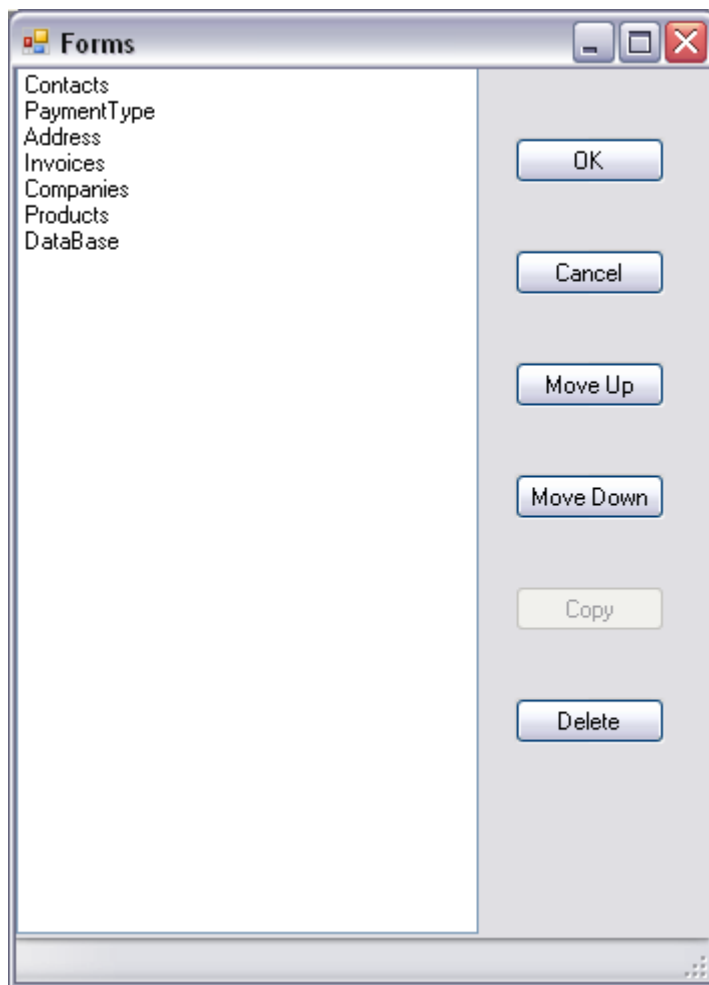


Application setting could be modified by selecting Application from designer menu. Application settings are modified in property editor.

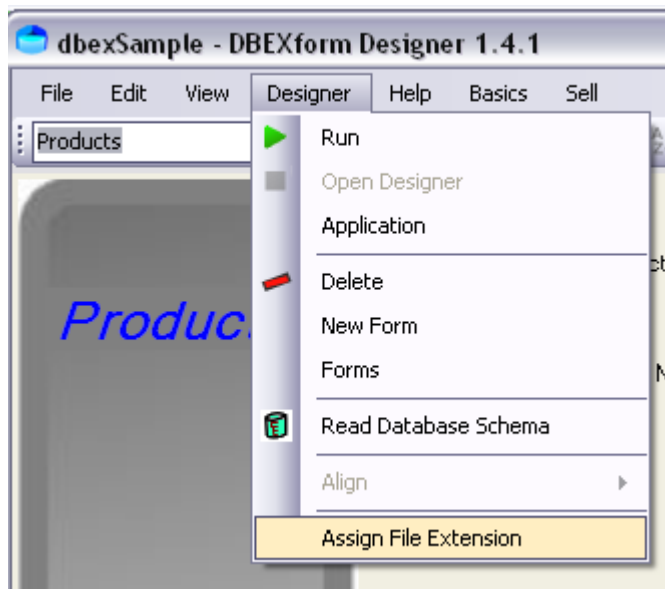
4.7 Modifying main menu

Main menu could be modified by selecting form and editing menu property in form. Menu property is name of the main menu so many forms could have same name.

Order of menu items could be sorted using forms window. Selected form could be moved up and down with corresponding button.



4.8 Assign .dbex file extensions for DBEXform



Select Assign File Extension from Designer menu. This might require Administrator privilege.

4.9 Player mode.

Player mode is used only to execute applications. Designer and help menus will be hidden. Player mode will started by selecting player license in About box.

Player like mode could be run with full version by starting application by giving parameter as application file.

Dbex.exe myapplication.dbex

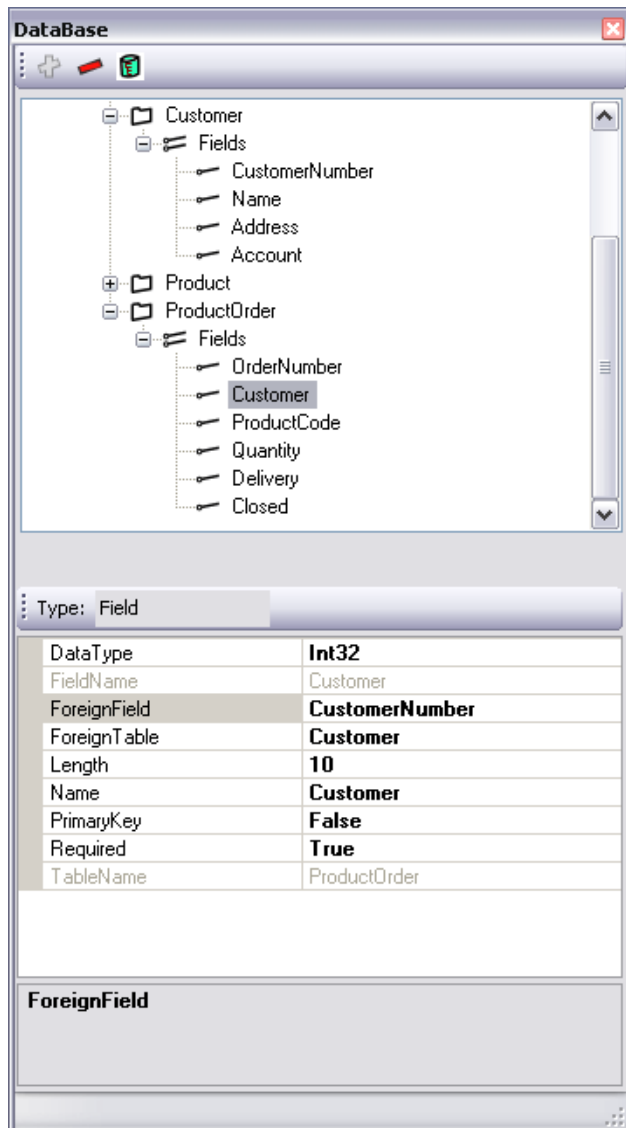
Player mode could be reverted by uninstalling application.

5. Editing field properties with property editor.

5.1 Editing table properties

Table properties are usually read from Database. There is no need to edit them manually. Basically editing is made same way than editing field properties.

5.2 Editing field properties



Fields properties are read from database except possible relation between tables. They must be given in Foreign Table and Foreign Field properties. Program needs that information to show related tables on forms.

Both properties have dropdown option. After filling foreign table property, foreign field values could be listed.

5.3 Property editor

Property editor shows all properties of selected component. Some of them are editable and others are read only fields, which might be a result of some other fields.

If field has drop down button, then field could be selected from drop down component, or in some case from dialog window. For the example, the is file dialog.

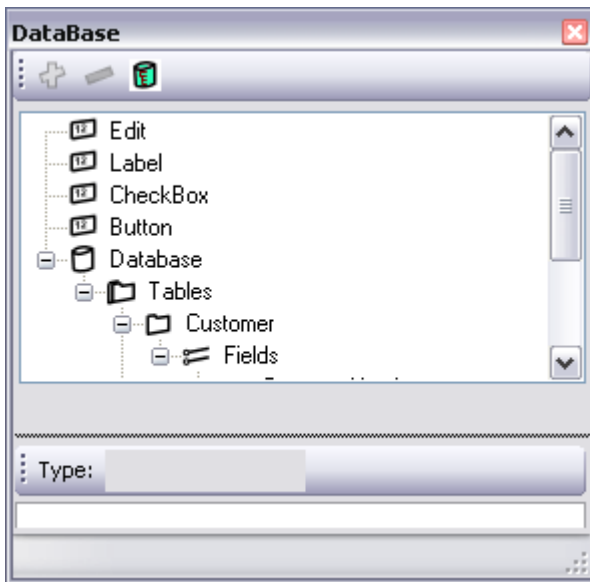
6. Adding components to window

6.1 Drag and drop database fields to form

Select field under the fields press mouse left button. Move the mouse pointer to the form and release button. Component will be added automatically to the form.

Other fields could be added with same way.

6.2 Drag and drop database fields to form



Components could be added to the screen manually by selecting component in database tree and drag and drop it to the form. Whole table is also possible to add form by single drop operation.

7. Editing Component properties

7.1 Changing components location

Point component with mouse and move it to new location by using drag and drop. You can also change position by changing values of top and left properties.

7.2 Changing size component

Component size could be changed when moving the small button. Button is shown when the component is selected. Size could be also changed by changing properties Height and width.

7.3 Changing properties of component

When the screen component is selected by clicking left button of mouse, there is shown properties of component in property window. Change property values by entering new value into the field.

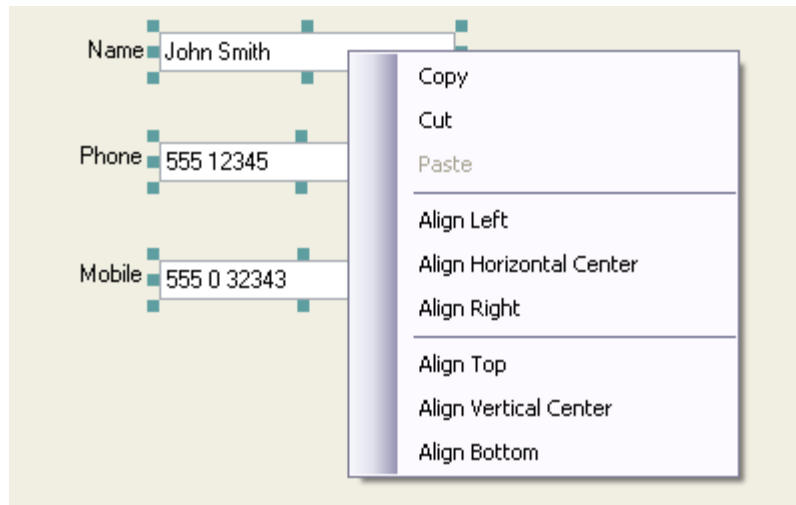
7.4 Changing properties of form

Form properties could be opened by clicking form. Then component properties could be seen in property Window.

7.5 Changing properties in multiple components of form

Multiple components could be selected by using rubber-band rectangle. All components that are partially inside of rectangle will be selected. Properties could be edited like selection of one component except script properties.

7.6 Component alignment



Multiple controls could be beautified by selecting align action. It could be found by clicking the right mouse button or from the designer menu.

Same popup menu has also options for copy and paste operations. Copy and cut could be made for multiple components,

Paste operations are allowed only for single component which should be base form or subform.

7.7 Script properties

Script property could be edited by pressing S= icon on top of the properties. Same sign will be shown on property which value is controlled by script. Script language manual is separated LikeBasic manual.

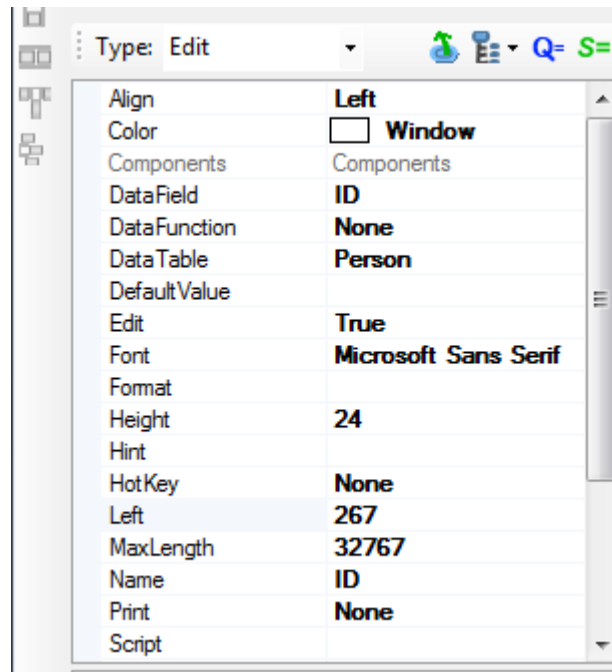
Actually script is executed and result of script could be return with "RETURN" statement. Return could also be shortened to = sign on begin of the statement.

All components and property of components could be used as variables.

Sample script:

```
= Address<>""
```

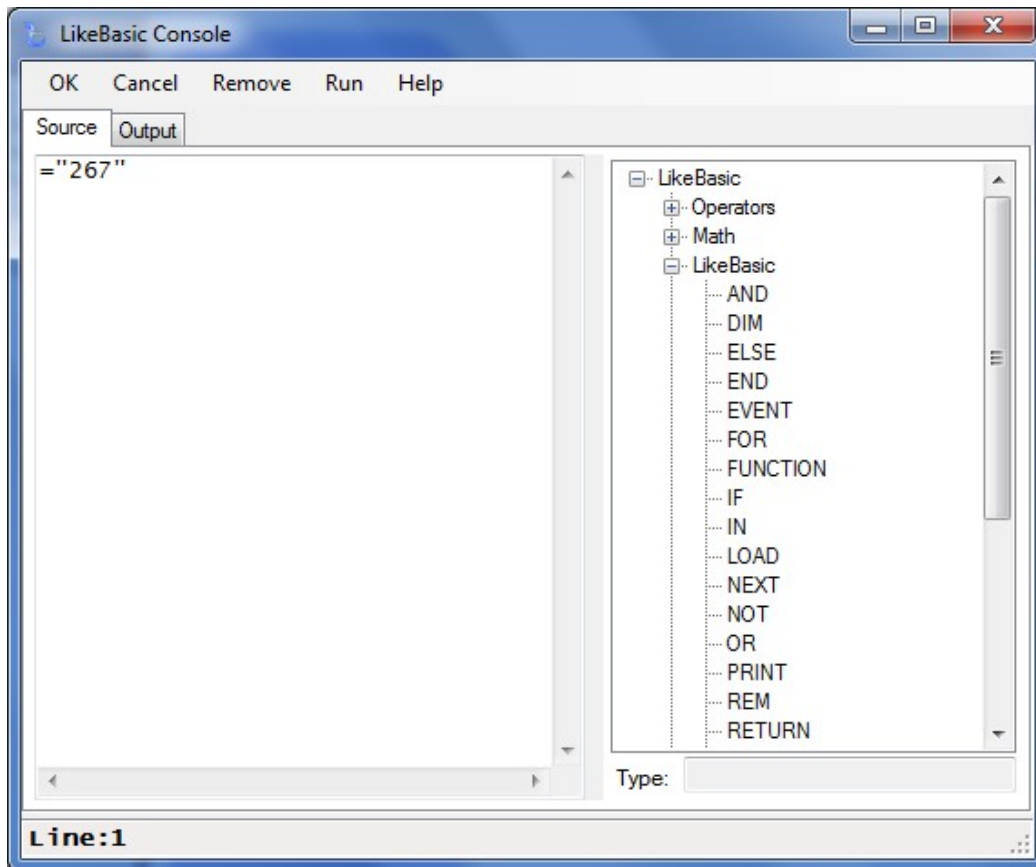
Result is true (1) if Address field has value.



Variables or objects are components on the form. It is not possible to point a field of table directly. It should first bind to component and after that component could be marked as invisible if needed.

If script does not return any value (null). Property value won't be changed.

7.8 Script console



OK: Apply changes with OK button and close window.

Cancel: Close window and lose changes.

Remove: Remove script.

Run: Test program and see results on output tab page.

Help: Open help for LikeBasic language.

Drag and drop command and functions from Likebasic explorer tree.

7.9 Query properties

Operation	Data Table	DataField/Expression	Compare	FormField/Script	Required
FILTER	Invoice	CustomerId	= Equal	ID	<input checked="" type="checkbox"/>
{+Add filter}					<input type="checkbox"/>

Query values are retrieved from database. Database and field will be selected and then define filter for query. There is also possible to define aggregate functions for source field.

7.10 Filter properties

Operation	Data Table	DataField/Expression	Compare	FormField/Script	Required
FILTER	Address	ID	= Equal	PostAddress	<input checked="" type="checkbox"/>
AND	Address	CompanyID	= Equal	ID	<input checked="" type="checkbox"/>
{+Add filter}					<input type="checkbox"/>

Filter property has wizard to define a filter.

Operation: select AND, OR operation how condition operations are concatenated. AND operations are calculated before or operation.

Data Table: Select table of field. {Expression} selection is for entering Sql expression.

DataField/Expression: Select field for filtering or enter Sql expression for filtering.

Compare: Select compare operation for filtering.

FormField/Script: Select field of form to be used in filter or select script and write a script for filter value.

Required: Select how handle situation if filter value is missing. If required and filter value missin then expression will be always false. If value of filter is not required then a filter won't be used.

8. Grids

8.1 Grid

Grid component could be used to display multiple records on form. Grid has sub elements called columns. Columns should be referencing to single field.

There could be different type of columns. There is a basic text column with checkbox option for true/false type. For compatible reasons it is named as column.

Three new Columns are SelectColumn,LocateColum and ButtonColumn. Three type are emulating single components Select, Locate and Button.

Column could be selected by clicking column header. Column width changes are made dragging from space between columns. Order of columns could be changed by dragging column to another position.

Grid position could be changed by dragging from data cells or empty area. Position and size changes could also be made by entering values in property editor. If grid should fill whole form, there should be select true in option fill.

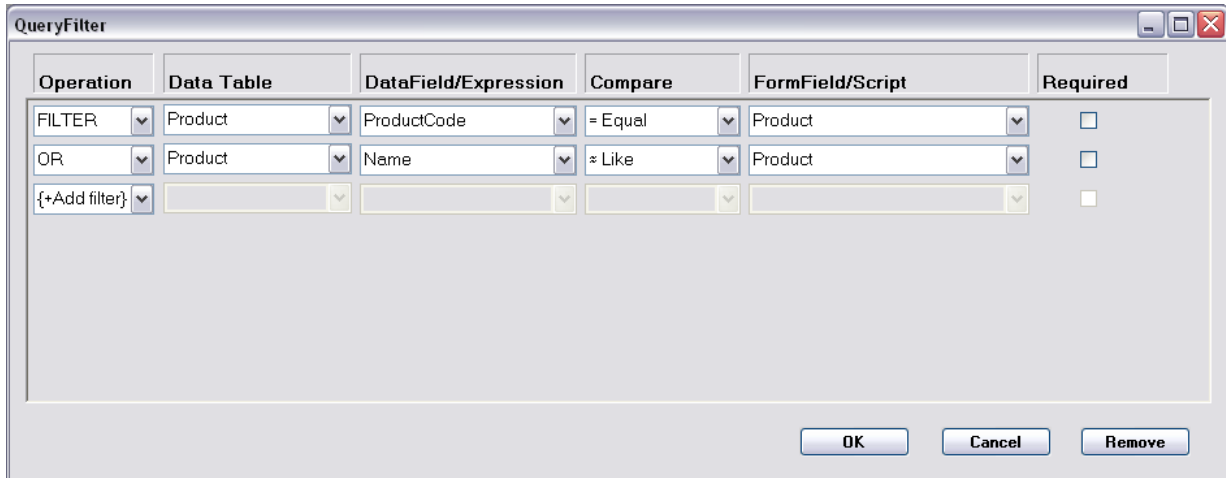
	Line	ProductCode	OrderPrice	OrderDiscount	OrderQuantity
▶	1	2345		2	1
	2	12345		2	123
*					

8.2 Locate

CustomerId	1	Customer Name	Innovation co
		Name	ID
InvoiceDate		Innovation co	1
Line			
1			

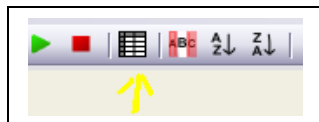
Locate component is combination of form, edit and grid component. Edit component should be used as filter value for query and finally edit field is filled from value of 1st column in grid.

Filter should always defined for query. Locate field could be used for multiple conditions. See the sample of the filter below.



8.3 Default grid

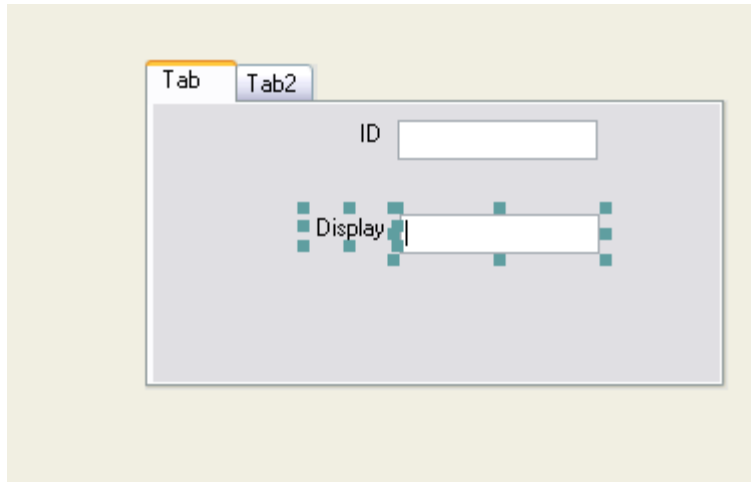
There could be one default filter on form. There could not be default filter on subform. Default filter will be shown when grid button pressed.



If default form has not been defined, program creates form automatic. Form could be edited in designer mode, by pressing grid button.

8.4 Tab Control

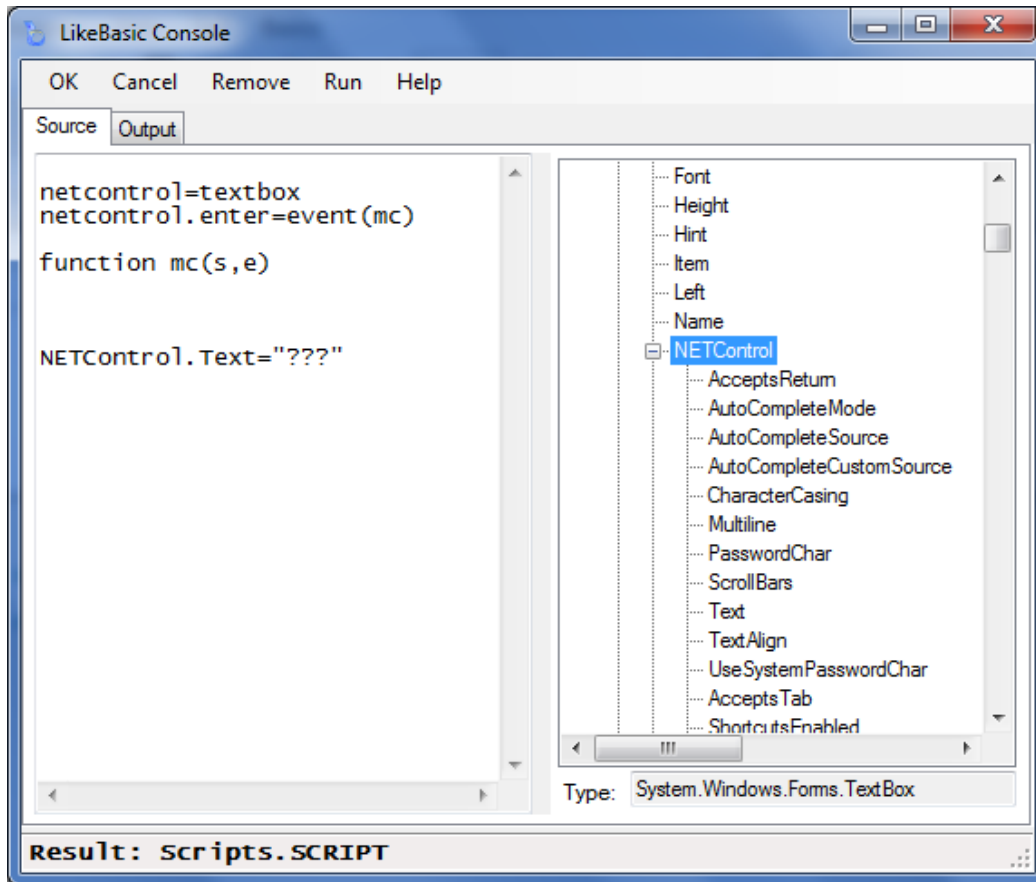
Tab controls could be used to increase number of fields and sizes on a same form by separating controls to tab sheets.



TabSheet will be drag and dropped to a form, subform or to existing tabSheet, when new tab will be added.

9. External Components

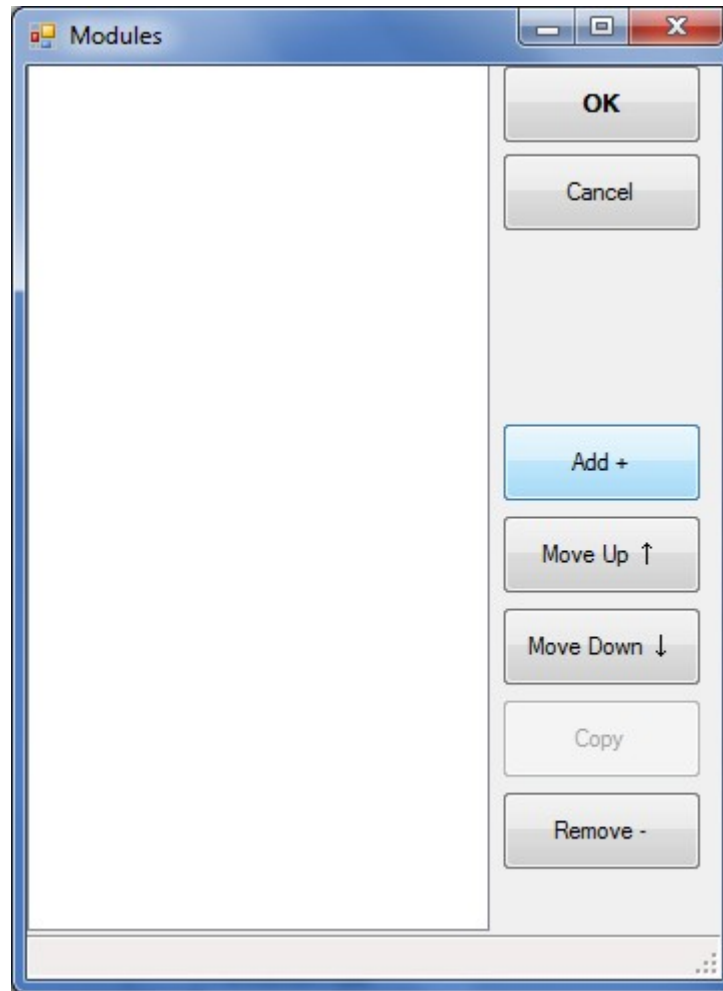
9.1 Net Control



Net control could be any library function or even activex component available for .NET. Control will be created and initialized using start script. NETControl is referencing actual control. It could be used to modify properties of control.

Control is will be created by simply assigning control class to NETControl. Name of class is considered as constructor if there is an exist construction method. Component are usually created without any parameter.

9.2 Using external modules

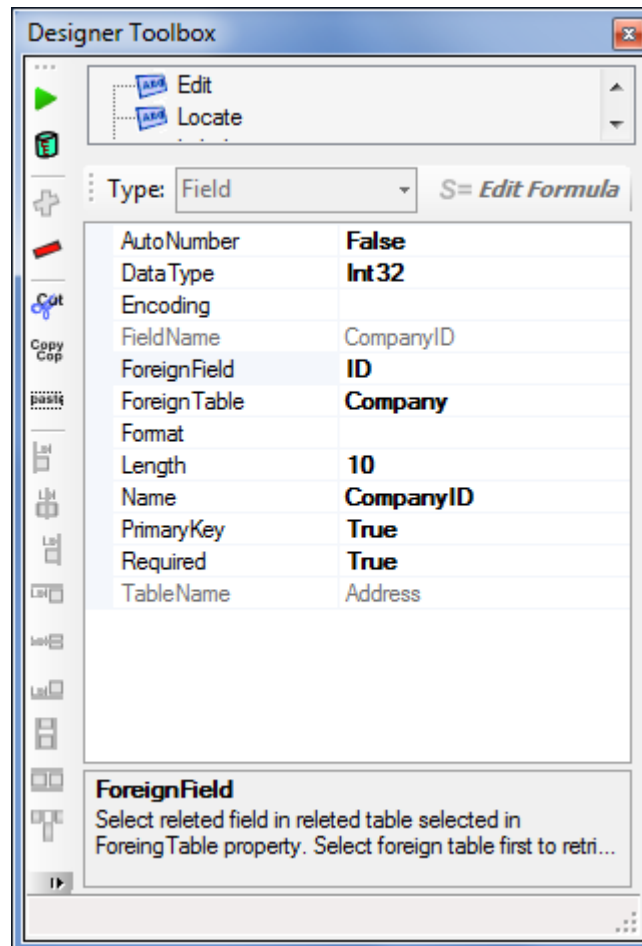


New DBEXcode architecture make possible to add new components and database support to application. New components components could be written with other development tools and they could be imported to DBEXform.

There is testli.dll to import rtf functionality to DBEXform. Source codes for this modules are available.

Imported components are usable same way than any other standard components.

10. Database definitions



10.1 Primary Key

Primary will be read from database. It should not be given in DBEXform. Some .NET framework functions require existence of primary, so all functionalities are not usable without primary key defined in database. Editing tables may give errors.

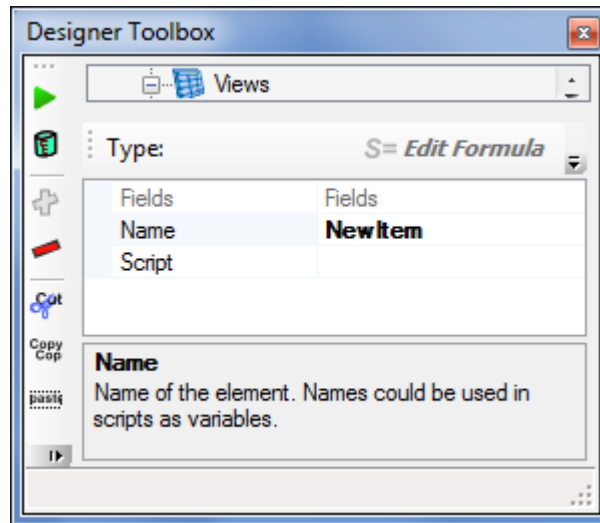
10.2 Relations

Basic thing in relational databases are relations between tables. Relations are made in DBEXform by telling software foreign keys and how they are related. Field has two properties, foreign table and foreign field where should assign field from other tables which belong to primary key.

10.3 Aliases

Sometimes there are situations when there are both way relations. This case has example in DBEXsample application in form AliasSample. Company has 3 different relations to Address and Address table have one relation to Company.

10.4 Views



View are acting little bit like tables but they does not support relations. Read and write operation are made with Script or using external libraries to do this. Script property is used to initialize view. Usually there is at least one Event that return result of query.

10.5 Enums

Enums are used to replace numeric values with describing text. This could be used in comboboxes in edit field and grids to make selection more clear.

11.List of properties and classes

11.1 Application

Application is a root object for all other objects.

11.1.1 Caption

Caption of the main window.

11.1.2 Database

Database defines for application.

11.1.3 Forms

List of all forms.

11.1.4 Name (readonly)

Not in use

11.1.5 SerialCode

Reserved

11.1.6 StartUp

Default form which will shown when application start first time.

11.1.7 TrialVersion

True if trial version

11.2 AccessDB

Access database.

11.2.1 Database

Filename of database

11.2.2 Name (readonly)

Not in use

11.2.3 Tables (list)

All normal tables or the database

11.3 MsSqlDB

MsSql database

11.3.1 Database

Name of database

11.3.2 Name (readonly)

Not in use

11.3.3 Tables (list)

All normal tables in the database

11.4 Table

Table in the database.

11.4.1 Fields (list)

All fields of table. Fields are selected with tree explorer.

11.4.2 Name (readonly)

Display name of the table

11.5 Field

Field in the table.

11.5.1 Datatype

Type of the data

11.5.2 FieldName (readonly)

Display name of the field

11.5.3 ForeignField

Field belongs to the primary key of related table. Field has many to one relation to this field.

11.5.4 ForeignTable

Table contains the foreign field.

11.5.5 Length

Length of the field

11.5.6 Name

Display name of the field

11.5.7 PrimaryKey

This field belongs to the primary key of table

11.5.8 Required

Field value can't be left empty.

11.5.9 TableName

Display name of the table

11.6 Form

Form is base component to browse and edit data. First query has bind to form component. Edited table must be defined in form. Filter conditions are defined in form.

11.6.1 Color

Background color of the form

11.6.2 Components (list)

Edited by selecting component on screen

11.6.3 DataSet

Access data table directly from script.

11.6.4 DataTable

Name of table edited on the form. First field fills this value, if value is not set before assigning component to form.

11.6.5 Filter

Create a filter for query. Assign 1 to many condition, to select records to retrieve from a database.

11.6.6 Font

Select used font and color of text

11.6.7 Height

Not editable

11.6.8 Left

Not editable

11.6.9 MaxRecords

Select all records by entering 0. Other values are used to limit the numbers of records. Large tables operation could become slow, so limiting maximum editing buffer, application could work much faster.

11.6.10 Menu

Main menu name where to add menu item for this form. Multiple forms could have same menu name.

11.6.11 Name

Name of the component. Every component should have different name.

11.6.12 Print

Not usable

11.6.13 Top

Not editable

11.6.14 Value

Not usable

11.6.15 Width

Not editable

11.6.16 Visible

Not editable

11.7 Edit

Edit control to enter free text.

11.7.1 Color

Select color of the background

11.7.2 Components (list)

Reserved

11.7.3 DataField

Name of a field in the database.

11.7.4 DataFuction

Data function will be used as aggregate function. If the is at least one aggregate function used, all other fields are used for grouping.

11.7.5 DataTable

Name of a table in database.

11.7.6 DefaultValue

Default value could be changed by entering script. If component is connected to datafield, value will be filled when adding new record. Otherwise record is filled only when form shown.

11.7.7 Edit

Select true if field is editable.

11.7.8 Font

Select used font and text color

11.7.9 Height

Height of the component on the form

11.7.10 Left

Horizontal position of the component on the form

11.7.11 Name

Name of the field. Every component must have different name.

11.7.12 Print

Select how the component will be printed. Value /frame

11.7.13 Script

Enter LikeBasic script which will be executed when leaving the control before moving data to dataset buffer.

11.7.14 TableField

Display unique name in the query

11.7.15 Top

Vertical position of the component on the form

11.7.16 Validated

Write a script to check if entered value is valid.

11.7.17 Value

Used for script to change the value of component.

11.7.18 Visible

Changing value to false will hide the component.

11.7.19 Width

Width of the component on the form

11.8 Locate

Edit control to enter free text.

11.8.1 Color

Select color of the background

11.8.2 Columns (list)

Internal use

11.8.3 Components (list)

Reserved

11.8.4 DataField

Name of the field in a database.

11.8.5 DataFuction

Data function will be used as aggregate function. If the is at least one aggregate function used, all other fields are used for grouping.

11.8.6 DataTable

Name of the table in a database.

11.8.7 DefaultValue

Default value could be changed by entering script. If component is connected to datafield, value will be filled when adding new record. Otherwise record is filled only when form shown.

11.8.8 DefaultValue

Default value could be changed by entering script

11.8.9 Edit

Select true if field is editable.

11.8.10 Font

Select used font and text color

11.8.11 Filter

Create the filter for query. Assign one or many condition, to select records retrieved from a database.

11.8.12 Height

Height of the component on the form

11.8.13 Left

Horizontal position of the component on the form

11.8.14 Name

Name of the field. Every component must have different name.

11.8.15 Print

Select how the component will be printed. Value /frame

11.8.16 Script

Enter LikeBasic script which will be executed when leaving the control before moving data to dataset buffer.

11.8.17 TableField

Display unique name in the query

11.8.18 Top

Vertical position of the component on the form

11.8.19 Validated

Write a script to check if entered value is valid.

11.8.20 Value

Used for script to change the value of component.

11.8.21 Visible

Changing value to false will hide the component.

11.8.22 Width

Width of the component on the form

11.9 SubForm

SubForm could be used as subquery for reading and writing from database.

11.9.1 Components (list)

Edited by selecting component on screen

11.9.2 DataSet

Access data table directly from script.

11.9.3 DataTable

Name of table edited on the form. First field fills this value, if value is not set before assigning component to form.

**11.9.4 Filter**

Create the filter for query. Assign 1 to many condition, to select records to retrieve from a database.

11.9.5 Font

Select used font and text color

11.9.6 Height

Not editable

11.9.7 Left

Not editable

11.9.8 MaxRecords

Select all records. Other values are used to limit the numbers of records. On the large tables operation could become slow, so limiting maximum editing buffer, application could work much faster.

11.9.9 Name

Name of the component. Every component must have different name.

11.9.10 Top

Not editable

11.9.11 Visible

Not editable

11.9.12 Width

Not editable

11.10 Label

Label displays static text fields on screen.

11.10.1 Font

Select used font and text color

11.10.2 Height

Height of the component on the form

11.10.3 Left

Horizontal position of the component on the form

11.10.4 Name

Name of the component. Every component must have different name.

11.10.5 Print

Select how the component will be printed. Value /frame

11.10.6 Text

Display static text on the form

11.10.7 Top

Vertical position of the component on the form

11.10.8 Visible

Changing value to false will hide the component.

11.10.9 Width

Width of the component on the form

11.11 CheckBox

CheckBox is used to enter on / off values

11.11.1 Components (list)

Reserved

11.11.2 DataField

Name of field in database.

11.11.3 DataFuction

Data function will be used as aggregate function. If the is at least one aggregate function used, all other fields are used for grouping. DO NOT USE WITH CHECKBOX,

11.11.4 DataTable

Name of table in database.

11.11.5 Edit

Select true if field is editable.

11.11.6 Font

Select used font and text color

11.11.7 Height

Height of the component on the form

11.11.8 Left

Horizontal position of the component on the form

11.11.9 Name

Name of the component. Every component must have different name.

11.11.10 Print

Select how the component will be printed. Value /frame

11.11.11 Script

Enter LikeBasic script which will be executed when clicking the control.

11.11.12 Text

Display static text at right side of checkbox

11.11.13 TableField

Display unique name on the query

11.11.14 Top

Vertical position of the component on the form

11.11.15 Validated

Write a script to check if entered value is valid.

11.11.16 Value

Used for script to change the value of component.

11.11.17 Visible

Changing value to false will hide the component.

11.11.18 Width

Width of the component on the form

11.12 Button

Button could be used to display external form with grid, to locate foreign record. Script property also allow to make calls to .NET libraries.

11.12.1 Font

Select used font and text color

11.12.2 Height

Height of the component on the form

11.12.3 Left

Horizontal position of the component on the form

11.12.4 Name

Name of a component. Every component must have different name.

11.12.5 Print

Select how the component will be printed. Value/frame

11.12.6 Script

Enter LikeBasic script which will be executed when clicking the control.

11.12.7 Text

Display text inside of the button.

11.12.8 Top

Vertical position of the component on the form

11.12.9 Visible

Changing value to false will hide the component.

11.12.10 Width

Width of the component on the form

11.13 Date

Used to display date value with dropdown date picker from calendar.

11.13.1 Components (list)

Reserved

11.13.2 Color

Select background color .

11.13.3 DataField

Name of a field in database.

11.13.4 DataFuction

Data function will be used as aggregate function. If the is at least one aggregate function used, all other fields are used for grouping.

11.13.5 DataTable

Name of a table in database.

11.13.6 DefaultValue

Default value could be changed by entering script

11.13.7 Edit

Select true if field is editable.

11.13.8 Font

Select used font and text color

11.13.9 Format

Select long or short format of date

11.13.10 Height

Height of the component on the form

11.13.11 Left

Horizontal position of the component on the form

11.13.12 Name

Name of the field. Every component must have unique name.

11.13.13 Print

Select how the component will be printed. Value /frame

11.13.14 Script

Enter LikeBasic script which will be executed when leaving the control.

11.13.15 TableField

Display unique name on the query

11.13.16 Top

Vertical position of the component on the form

**11.13.17 Validated**

Write a script to check if entered value is valid.

11.13.18 Value

Used for script to change the value of component.

11.13.19 Visible

Changing value to false will hide the component.

11.13.20 Width

Width of the component on the form

11.14 Grid

Select component is used to select value from predefined list.

11.14.1 Color

Select background color .

11.14.2 Columns

Enter number of columns.

11.14.3 Components (list)

Columns are accessed by selecting them from grid component.

11.14.4 Font

Select used font and text color

11.14.5 Height

Height of the component on the form

11.14.6 Left

Horizontal position of the component on the form

11.14.7 Name

Name of the field. Every component must have different name.

11.14.8 Print

Select how the component will be printed. Value /frame

11.14.9 Top

Vertical position of the component on the form

11.14.10 Visible

Changing value to false will hide the component.

11.14.11 Width

Width of the component on the form

11.15 Select

Select one of the predefined values to component

11.15.1 Components (list)

Reserved

11.15.2 Color

Select color of the background

11.15.3 DataField

Name of the field in the database.

11.15.4 DataFuction

Data function will be used as aggregate function. If the is at least one aggregate function used, all other fields are used for grouping.

11.15.5 DataTable

Name of the table in database.

11.15.6 DefaultValue

Default value could be changed by entering script

11.15.7 Edit

Select true if field is editable.

11.15.8 Font

Select used font and text color

11.15.9 Height

Height of the component on the form

11.15.10 Left

Horizontal position of the component on the form

11.15.11 Name

Name of the field. Every component must have different name.

11.15.12 Print

Select how the component will be printed. Value /frame

11.15.13 Script

Enter LikeBasic script which will be executed when leaving the control before moving data to dataset buffer.

11.15.14 TableField

Display unique name in the query

11.15.15 Top

Vertical position of the component on the form

11.15.16 Validated

Write a script to check if entered value is valid.

11.15.17 Value

Used for script to change the value of component.

11.15.18 Visible

Changing value to false will hide the component.

11.15.19 Width

Width of the component on the form

11.16 Column

Display text data in grid or a checkbox for boolean values.

11.16.1 Align

Align setting will be used to select alignment of text in control.

11.16.2 Color

Reserved

11.16.3 Components (list)

Reserved

11.16.4 DataField

Name of field in database.

11.16.5 DataFuction

Data function will be used as aggregate function. If the is at least one aggregate function used, all other fields are used for grouping.

11.16.6 DataTable

Name of table in database.

11.16.7 DefaultValue

Default value could be changed by entering script

11.16.8 Edit

Select true if field is editable.

11.16.9 Font

Reserved

11.16.10 Format

Format of a text for numeric types. Basicly there are three charactes in format “#” for normal place of number, “0” for 0 fill and “.”(dot) for decimal point. Actual decimal point will be used as defined in system. There is also “,” for thousands separator.

11.16.11 Height

Not in use

11.16.12 Header

Text for the header of the column.

11.16.13 Index

Index of the column. Columns are sorted by index.

11.16.14 Left

Not in use

11.16.15 Name

Name of a component. Every component must have a unique name.

11.16.16 Print

Select how the component will be printed. Value /frame

11.16.17 Script

Enter LikeBasic script which will be executed when leaving the control before moving data to dataset buffer.

11.16.18 TableField

Read a unique name on the query

11.16.19 Top

Not in use

11.16.20 Validated

Used for script to validate if component have a correct value for saving to database.

11.16.21 Value

Used for script to calculate value of the component.

11.16.22 Visible

Changing value to false will hide the component.

11.16.23 Width

Width of the column on the grid

11.17 SelectColumn

Select column component is used to select a value from the predefined list.

11.17.1 Align

Align setting will be used to select alignment of text in control.

11.17.2 Color

Reserved

11.17.3 Components (list)

Reserved

11.17.4 DataField

Name of field in database.

11.17.5 DataFuction

Data function will be used as aggregate function. If the is at least one aggregate function used, all other fields are used for grouping.

11.17.6 DataTable

Name of table in database.

11.17.7 DefaultValue

Default value could be changed by entering script

11.17.8 Edit

Select true if field is editable.

11.17.9 Font

Reserved

11.17.10 Format

Format of a text for numeric types. Basicly there are three charactes in format “#” for normal place of number, “0” for 0 fill and “.”(dot) for decimal point. Actual decimal point will be used as defined in system. There is also “,” for thousands separator.

11.17.11 Height

Not in use

11.17.12 Header

Text for the header of the column.

11.17.13 Index

Index of the column. Columns are sorted by index.

11.17.14 Items

List of possible values for a component. Values are separated by line feed.

11.17.15 Left

Not in use

11.17.16 Name

Name of a component. Every component must have a unique name.

11.17.17 Print

Select how the component will be printed. Value /frame

11.17.18 Script

Enter LikeBasic script which will be executed when leaving the control before moving data to dataset buffer.

11.17.19 Sort

Select if field will be used for sorting when a form has been initialized

11.17.20 TableField

Read a unique name on the query

11.17.21 Top

Not in use

11.17.22 Validated

Used for script to validate if component have a correct value for saving to database.

11.17.23 Value

Used for script to calculate value of the component.

11.17.24 Visible

Changing value to false will hide the component.

11.17.25 Width

Width of the column on the grid

11.18 LocateColumn

Select component is used to select value from predefined list.

11.18.1 Align

Align setting will be used to select alignment of text in control.

11.18.2 Color

Reserved

11.18.3 Components (list)

Reserved

11.18.4 Color

Reserved.

11.18.5 DataField

Name of field in database.

11.18.6 DataFuction

Data function will be used as aggregate function. If the is at least one aggregate function used, all other fields are used for grouping.

11.18.7 DataTable

Name of table in database.

11.18.8 DefaultValue

Default value could be changed by entering script

11.18.9 Edit

Select true if field is editable.

11.18.10 Filter

Define filter for queries. Lookup field will be also used as filter which will be compared to all listed fields in lookup grid. There is possible filter out some impossible selections.

11.18.11 Font

Reserved

11.19 Format

Format of a text for numeric types. There are three characters in format: “#” for normal place of number, “0” for 0 fill and “.”(dot) for decimal point. Actual used decimal point will be defined in the system settings. There is also “,” for thousands separator.

11.19.1 Height

Not in use

11.19.2 Header

Text for the header of the column.

11.19.3 Index

Index of the column. Columns are sorted by index.

11.19.4 Left

Not in use

11.19.5 Name

Name of a component. Every component must have a unique name.

11.19.6 Print

Select how the component will be printed. Value /frame

11.19.7 Script

Enter LikeBasic script which will be executed when leaving the control before moving data to dataset buffer.

11.19.8 Sort

Select if field will be used for sorting when a form has been initialized

11.19.9 TableField

Read a unique name on the query

11.19.10 Top

Not in use

11.19.11 Validated

Used for script to validate if component have a correct value for saving to database.

1.1.1. Value

Used for script to calculate value of the component.

11.19.12 Visible

Changing value to false will hide the component.

11.19.13 Width

Width of the column on the grid

11.20 ButtonColumn

Select component is used to select value from predefined list.

11.20.1 Align

Align setting will be used to select alignment of text in control.

11.20.2 Color

Reserved

11.20.3 Components (list)

Reserved

11.20.4 Color

Reserved.

11.20.5 DataField

Not is use.

11.20.6 DataFuction

Not is use.

11.20.7 DataTable

Not is use.

11.20.8 DefaultValue

Not is use.

11.20.9 Edit

Not in use.

11.20.10 Font

Reserved

11.20.11 Format

Format of a text for numeric types. Basically there are three characters in format “#” for normal place of number, “0” for 0 fill and “.”(dot) for decimal point. Actual decimal point will be used as defined in system. There is also “,” for thousands separator.

11.20.12 Height

Not in use

11.20.13 Header

Text for the header of the column.

11.20.14 Index

Index of the column. Columns are sorted by index.

11.20.15 Left

Not in use

11.20.16 Name

Name of a component. Every component must have a unique name.

11.20.17 Print

Select how the component will be printed. Value /frame

11.20.18 Script

Enter LikeBasic script which will be executed when entering to the control. Normally this will be made by using Mouse.

11.20.19 TableField

Read a unique name on the query

11.20.20 Top

Not in use

11.20.21 Validated

Used for script to validate if component have a correct value for saving to database.

11.20.22 Value

Used for script to calculate value of the component.

11.20.23 Visible

Changing value to false will hide the component.

11.20.24 Width

Width of the column on the grid

11.21 Shape

Shape is used to display panels and images on form

11.21.1 Border

Select style of borders.

1.1.2. Color

Select background color .

1.1.3. Font

Not in use

1.1.4. FrameWidth

Define width of frame in image. This frame won't be stretched same way than other part of picture. This makes possible to create stretchable custom frame images.

1.1.5. Height

Height of the component on the form

1.1.6. Left

Horizontal position of the component on the form

1.1.7. Name

Name of the field. Every component must have different name.

1.1.8. Print

Select how the component will be printed. Value /frame

1.1.9. Top

Vertical position of the component on the form

1.1.10. Value

Not in use.

1.1.11. Width

Width of the component on the form

1.1.12. Visible

Changing value to false will hide the component.

12. Scripting



DBEXform has embedded LikeBasic scripting engine. Language syntax could be read from LikeBasic.pdf manual.

Language is much like a common Basic language. Because basic is not standard language, LikeBasic is collection of syntax of Basic like languages. Primary target was to create easy program for short scripts.

Loose typing makes programming easy and fast in small scripting, but may lead to problems when trying to write large applications.

Capability to import developer written dlls to program makes possible to write complicated program with scripting.

In the script there is possible to use values of data fields on the form. It is possible to let an get values.

13. Integrating application

When program is started with arguments, designer will be deactivated. There is two arguments that could be given in startup.

<Program> <xml config file> <start up form>

<Program> - Program name
<xml config file> - File name of config file stored with save.
<start up form> - Form name which will be shown.

For example:

“c:\program files\dbex\dbex.exe” “c:\program files\dbex\myapp.dbex” customer

14. Version history

Version 1.6 Jan 28 2010

- Views
-

Version 1.5 Oct 10 2009

- Localization
- Locate component for grid
- Select component for grid
- Button component for grid
- Net component to import .Net libraries
- Tab component
- Aggregate functions
- Player mode
- Default values

Version 1.4 May 13 2009

- Locate component
- Grid wysiwyg designer
- Default grid
- Player mode
- Default values

Version 1.3 Mar 3 2009

- Subform
- Grid component
- Filter property
- DataSet property
- Copy,Cut,Paste components on designer

Version 1.2 Dec 2 2008

- LikeBasic scripted properties.
- Date component



- New designer, with multi select etc.
- Print form
- Visible property
- Validate property

Version 1.1

- LikeBasic scripting added.
- Select component added
- Shape component added
- Font property added to components
- Color property added