

DBEXform



User Manual

Version 1.6.1 Oct 2009

Index

Index.....	2
1. Introduction.....	3
2. Running existing application.....	4
3. Browsing data	6
4. Editing data	9
5. Editing subforms	13
6. Printing	14
7. Support.....	15

1.Introduction

DBEXform is easy to user form interface for Microsoft Databases. End user interface is easily modified. Supported databases are **Access** and **MsSql** server.

Simplest way to build workable multi user is to use *SQLEPRESS* and *Management Studio*. Both are freely downloadable from *Microsoft Download Center*.

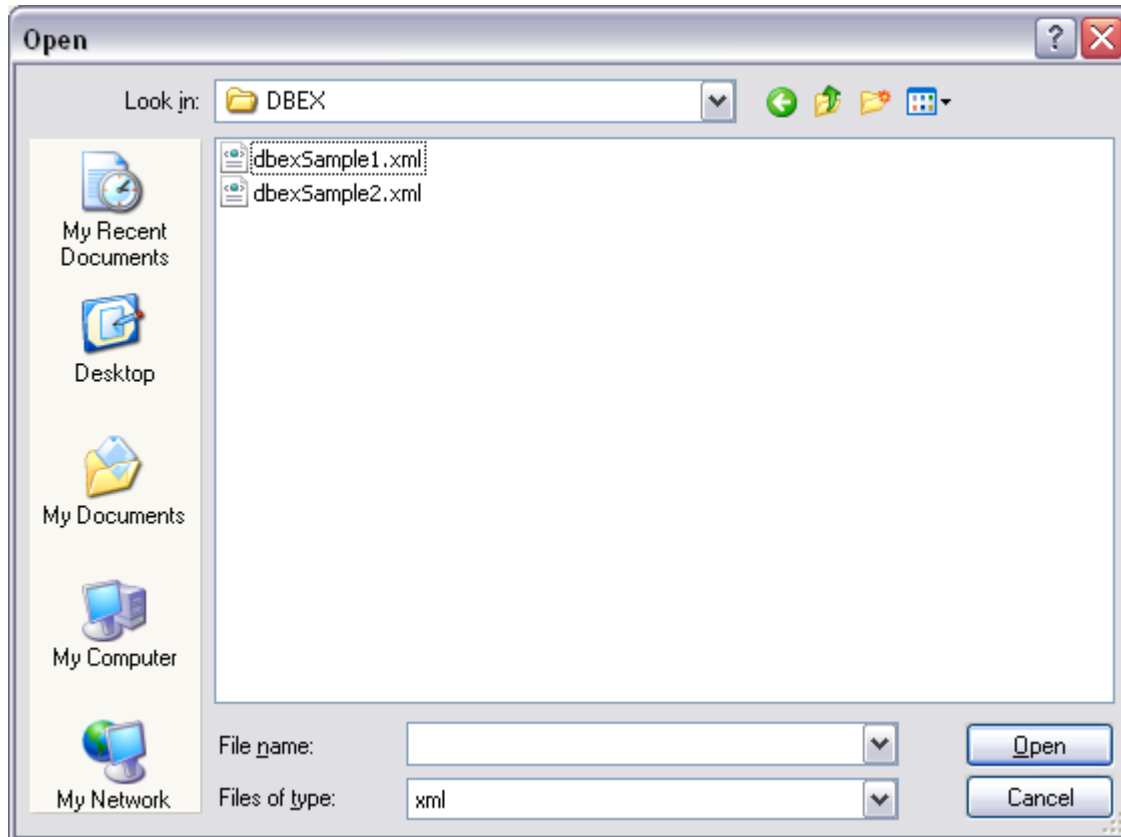
Access support has included primarily for demo reasons. It is easy to demonstrate program with Access file, because it could be started to use without any extra installation. Still it is mostly usable for a small single user application.

This manual introduces some basic functionality. Because expandability of *DBEXform* it's possible that used applications are much different look alike than these samples.

Buttons are widely programmable and the could many kind of checking and triggers inside of visual components. If there is much feature in application, there should be separated manual of these functions.

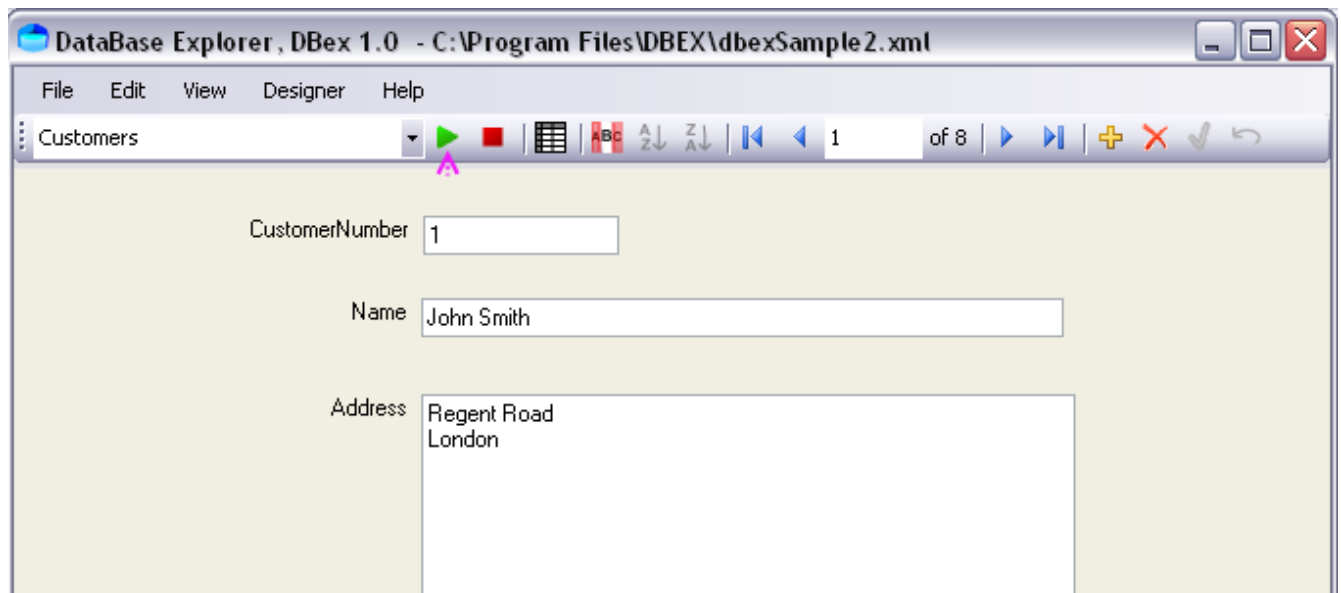
2. Running existing application

2.1. Opening existing application



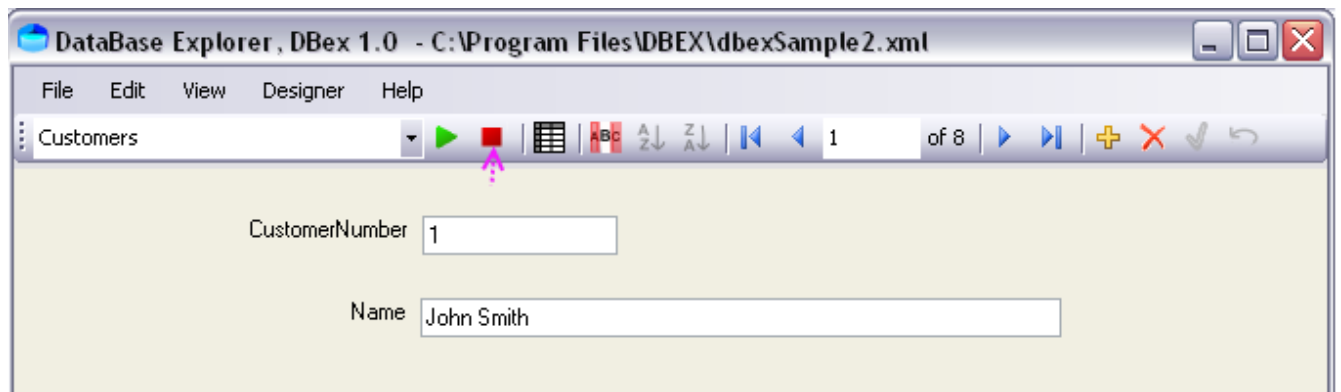
Select from File menu Open and select application file *.xml with open file dialog window.

2.2. Running application



Select form from drop down list and press Run button. Pressing enter key in drop down field will have the same effect.

2.3. Designing application

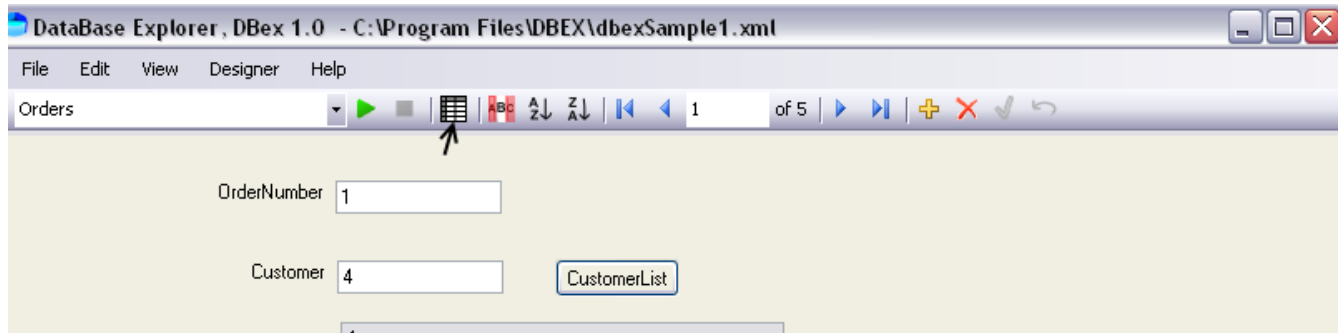


Pressing stop sign - red box, will open the Database window. If application has been started using shortcut then Designer will be hidden.

- **Shortcut startup is only available in registered version.**
- **For more information how to design application read [dbexManual](#)**

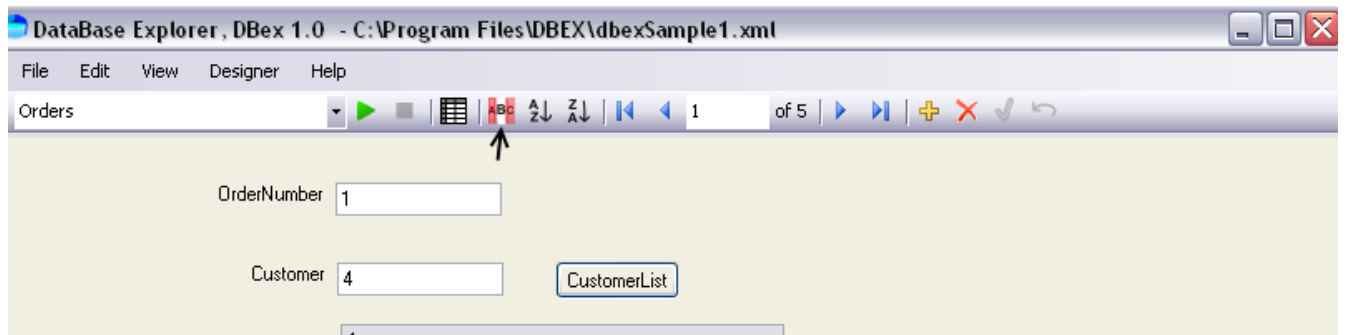
3. Browsing data

3.1. Changing between form and list



Swapping between form and list view could be made using the grid button. Data could be edited only in form view.

3.2. Filtering



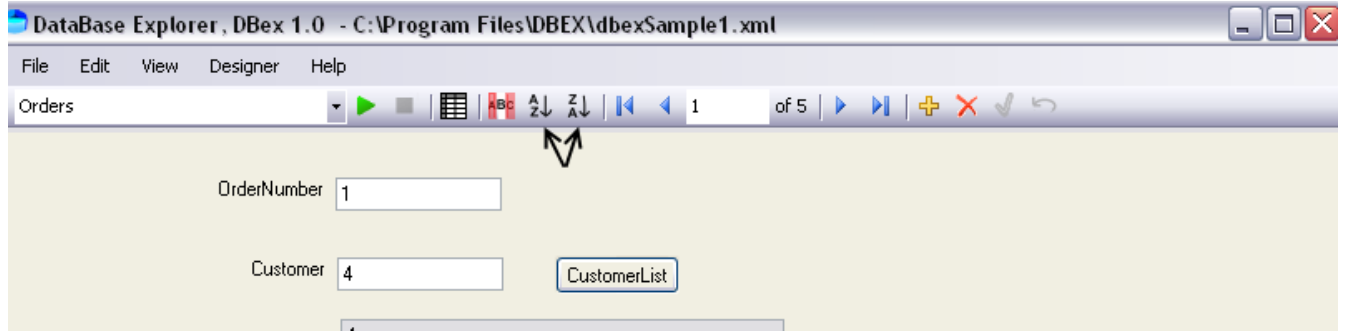
Filtering data could be made by pressing filter button. After pressing button you can edit values for filter in multiple fields.

Alphabet filter could be a part of the field value. Simon and Samuel names could be found entering alphabet s into the name field. '%' character could be used as wildcard, if you want to find text in middle of the field.

Filter will be accepted with ok button or repressing filter button.

Pressing cancel button cancels operation.

3.3. Changing sort order.



Select field for sorting and press one of two sort button. First button causes sort order to ascending. Second button selects opposite sort order.

3.4. Browsing buttons and record item field

Record could be changed by using browsing buttons.

- |< - Move to first record in query
- < - Move to previous record
- > - Move to next record
- >| - Move to last record

Record could also be changed by entering record pointer into the record item field.

Count of the all records in selected query is shown after record item field. Maximum records in query could be limited in form property window.

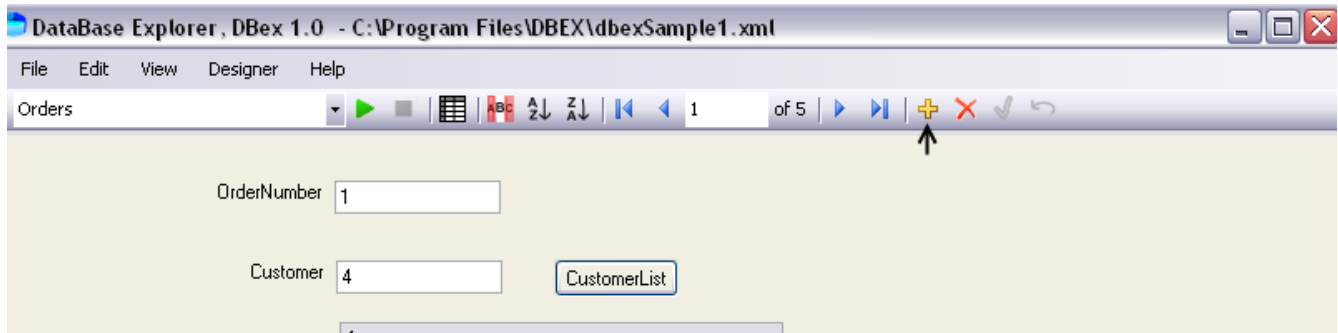
3.5. Grid view

	Customer_CustomerNumber	Customer_Name	Customer_Address	Customer_Account
▶	4	Simon Stone	Hill Street 76 New York	<input type="checkbox"/>
	2	Samuel Smith	10 th Avenue New York	<input type="checkbox"/>
	3	Michael Johnson	Park Avenue 400 Los Angeles	<input type="checkbox"/>
	1	John Smith	Regent Road London	<input checked="" type="checkbox"/>
*				<input type="checkbox"/>

In grid record could be selected same way than in form view, using browsing buttons. Cursor keys can be also used: up, down, page up, page down. When a record is selected, it could be edited by changing to the form view.

4. Editing data

4.1. Adding new record

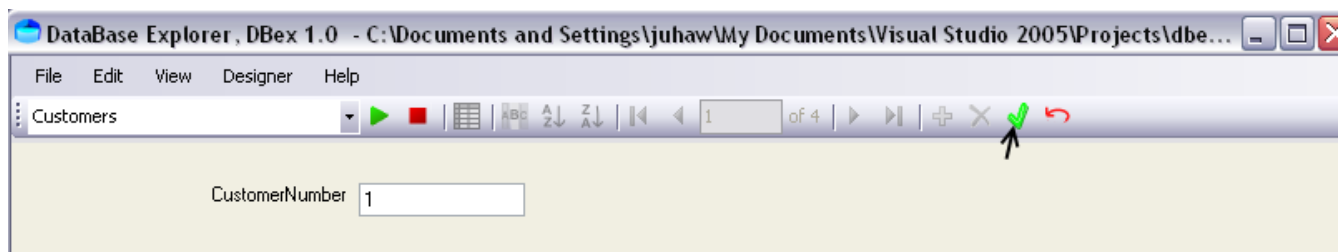


To add new record, press plus button. Program adds new empty record. To save the record, at least the primary key fields must be entered. Record can not be changed during record editing.

4.2. Modifying data

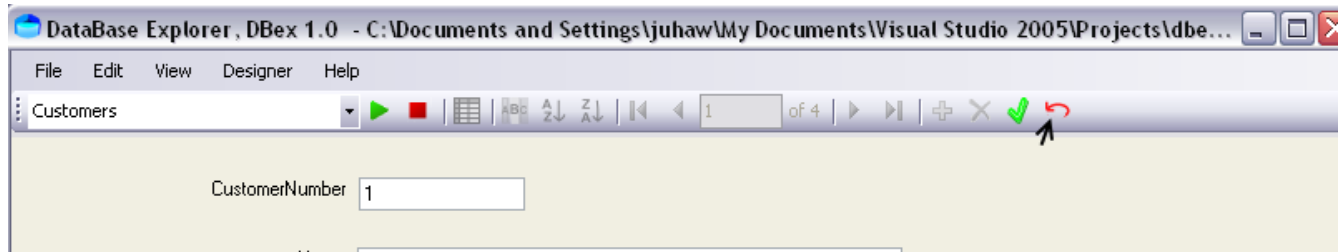
To edit field, select it and start editing. Editing mode will be changed automatic.

4.3. Accept changes



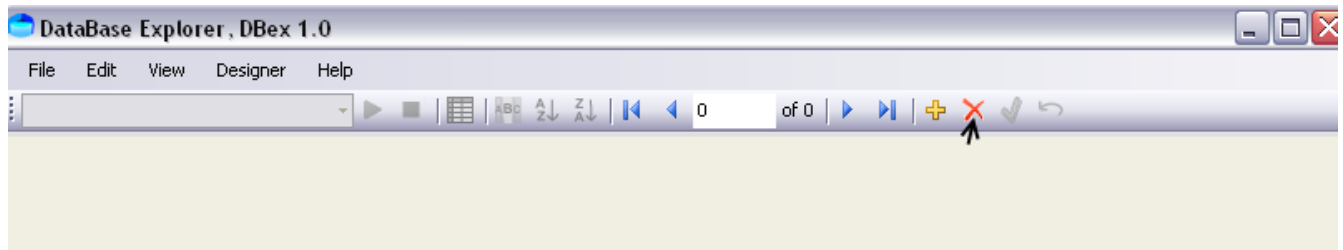
To save changes made to fields press Ok button. Pressing Ok button in edit and adding state will save the changes to database.

4.4. Cancel changes



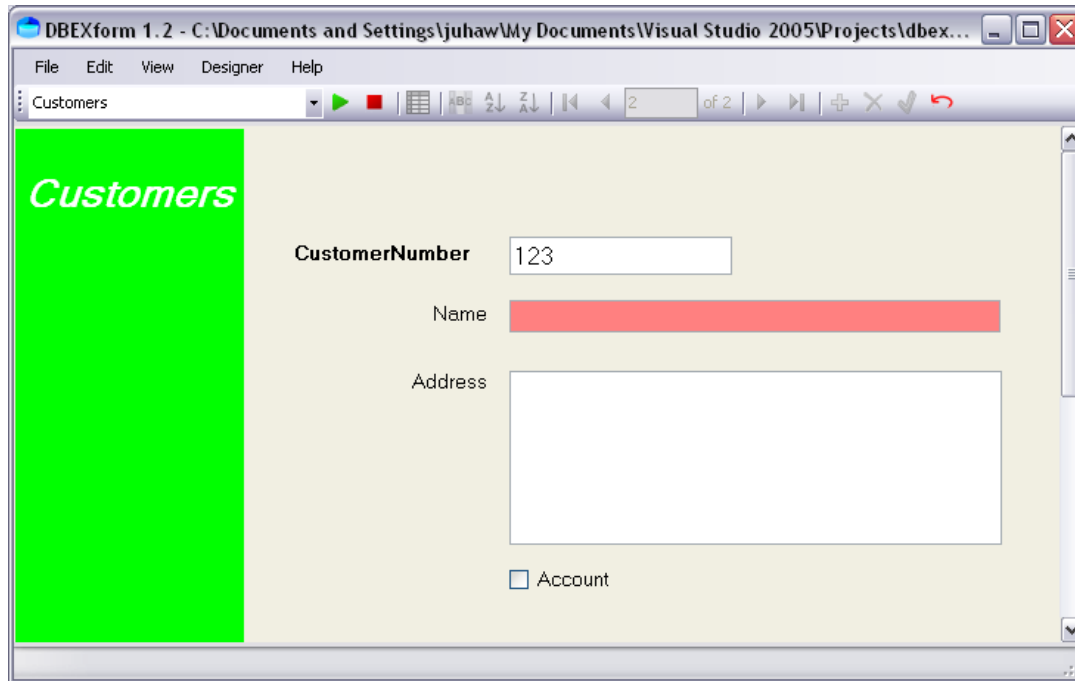
If you like to revert changes made to edited record, or remove record which is about to add, press cancel button. Last records changes before pressing ok, will be canceled. Cancel does not revert deleting.

4.5. Deleting record



When wanting to remove record, press delete button. Program will ask a confirmation for delete. Answering "yes" will delete a record permanently. "No" selection cancels pressing delete button.

4.6. Validation



It is possible to define validation for field. If validation fails then Accept icon is disabled, so it is not possible to enter to database wrong data. In the example only validation is that the name must be entered.

4.7. Locate list

CustomerId	<input type="text" value="1"/>	Customer Name	<input type="text" value="Innovation co"/>								
InvoiceDate	<table border="1"> <thead> <tr> <th>Name</th> <th>ID</th> </tr> </thead> <tbody> <tr> <td>Innovation co</td> <td>1</td> </tr> <tr> <td> </td> <td> </td> </tr> <tr> <td> </td> <td> </td> </tr> </tbody> </table>		Name	ID	Innovation co	1					
Name	ID										
Innovation co	1										
Line	<input type="text" value="1"/>	OrderDiscount	<input type="text" value="2"/>								

When locate list has been selected, the list of suitable values are listed. List could be updated when new value has been entered to edit control.

Record selection could be made using arrow keys and enter or mouse click.

5. Editing subforms

Subforms are also allowed to edit data inside the sub form.

5.1. Grid in subform

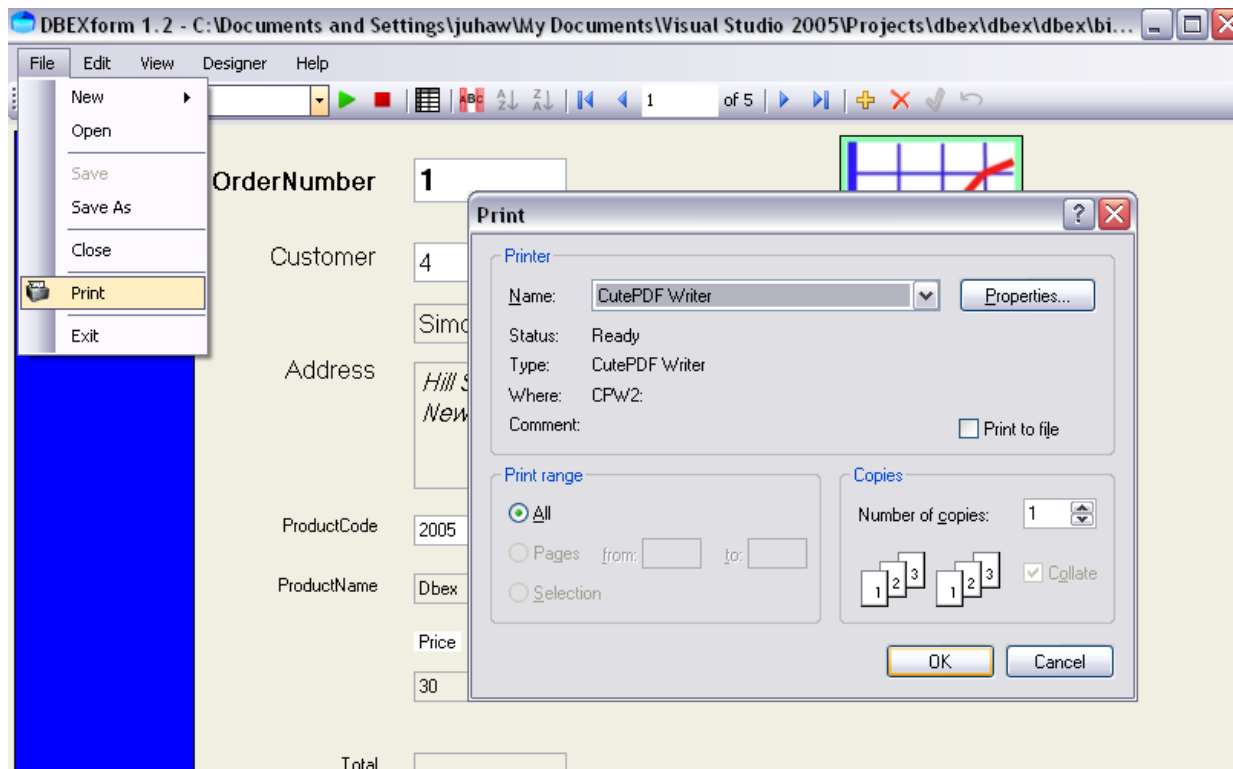
Line	Product code	OrderQuantity	OrderDiscount
<input type="text" value="1"/>	<input type="text" value="2345"/>	<input type="text" value="1"/>	<input type="text" value="2"/>

	Line	ProductCode	OrderPrice	OrderDiscount	OrderQuantity
▶	1	2345	10	2	1
	2	12345	15	2	123
*					

Editing could be started by editing field. New record could be starting to edit line marked asterisk (*).

It is possible to edit or add more than one record without storing them to database. Every modified records are stored to database when ok icon will be clicked.

6. Printing



There is possible to print forms. Every selected record will be printed. Grid print is not supported in this version.

Printable records could b controlled by assigning filters.

Select print from file menu. Then you can select the destination printer and number of copies. When this is done use Ok button to start printing.

7. Support

Web page:

<http://www.willmansoft.com>

E-mail:

support@willmansoft.com

Forum:

<http://www.willmansoft.com/WSforum>